

WOODLAND SCHOOL DISTRICT #404
RESOLUTION #2551
Redistrict the Legal Descriptions of Director Areas

A RESOLUTION of the Board of Directors of Woodland School District #404, to redistrict the legal descriptions of the director areas as required by RCW 29A.76.010.

WHEREAS, RCW 29A.76.010 states that it is the responsibility of each county, municipal corporation and special purpose district with a governing body comprised of internal director, council or commissioner districts, not based on statutorily required land ownership criteria, to periodically redistrict its governmental unit, based on population information from the most recent federal decennial census; and

WHEREAS, RCW 28A.315.065 states that any district boundary changes shall be submitted to the County Auditors and the Educational Service District Superintendent, after the changes have been adopted by the board, and

WHEREAS, the Woodland School District Board of Directors has reviewed the director districts and has aligned the descriptions and maps based on population; and

WHEREAS, the legal descriptions and maps for said director districts are attached to this resolution and by this reference made a part hereof;

THEREFORE, BE IT RESOLVED that the Board of Directors of Woodland School District #404, Cowlitz County, Washington, establishes the described director districts to be adopted in accordance to the attached descriptions and maps.

Dated this 23rd day of January, 2012.

ATTEST:

Secretary to the Board

President

Director

Director

Director

Director

Sammamish Data Systems Inc.

PO Box 70382

Bellevue, WA 98005-0382

Telephone (425)867-1485

Fax (425)861-0184

E-mail: sales@sammdata.com

Woodland School District Legal Description – Jan 4th, 2012

Director District 1

Starting at the intersection of BNSF Railroad and Whalen Rd.
Easterly and northeast on Whalen Rd to S Perkin Rd.
Northwest and north on Perkins Rd to 5th St.
North on 5th St to Bozarth Ave.
East on Bozarth Ave to 3rd St.
North on 3rd St to Loves Ave.
East on Loves Ave to Hoffman St.
Northerly on Hoffman St to Washington St.
East on Washington St to Pacific Ave.
South on Pacific Ave to Lewis River Rd.
Northeast on Lewis River Rd to Old Pacific Hwy.
South by southeast on the extension of Old Pacific Hwy to the county line.
Meandering northwesterly on the county line to the school district boundary.
Clockwise on the school district boundary to the southern crossing of BNSF Railroad.
North on the rail line to the point of the beginning.

Director District 2

Starting at the intersection of BNSF Railroad and Whalen Rd.
Easterly and northeast on Whalen Rd to S Perkin Rd.
Northwest and north on Perkins Rd to 5th St.
North on 5th St to Bozarth Ave.
East on Bozarth Ave to 3rd St.
North on 3rd St to Loves Ave.
East on Loves Ave to Hoffman St.
Northerly on Hoffman St to Washington St.
East on Washington St to Pacific Ave.
South on Pacific Ave to Lewis River Rd.
Northeast on Lewis River Rd to I – 5.
North by northwest on I – 5 to the school district boundary.
Counter-clockwise on the school district boundary to the southern crossing of BNSF Railroad.
North on the rail line to the point of the beginning.

Director District 3

Starting at the intersection of Lewis River Rd and Insel Rd.
North on Insel Rd to the 2010 Woodland city limits.
East, north and east on the city limits to Gun Club Rd.
North on Gun Club Rd to the 2010 Woodland city limits.
Southeast, north and east on the city limits to Robinson Crk.
North on Robinson Crk to Robinson Creek Meadow Rd.
East on Robinson Creek Meadow Rd to Lewis River Rd.
Northeasterly on Lewis River Rd to Little Kalama River Rd.
Meandering northerly on the Little Kalama River Rd to Davis Peak Rd.
East on Davis Peak Rd to the powerline in the northeast quarter section of Township 06, Range 01E, Section 34.
South by southeast on the powerline to Lewis River Rd.
West on Lewis River Rd to the unnamed creek, mid way through Township 05, Range 01E, Section 03.
South on the unnamed creek to the county line.
Meandering west on the county line to the extension of Old Pacific Hwy.
North by northwest on the extension to Old Pacific Hwy and Lewis River Rd.
Northeast on Lewis River Rd to the point of the beginning.

Director District 4

Starting at the intersection of Lewis River Rd and Insel Rd.
North on Insel Rd to the 2010 Woodland city limits.
East, north and east on the city limits to Gun Club Rd.
North on Gun Club Rd to the 2010 Woodland city limits.
Southeast, north and east on the city limits to Robinson Crk.
North on Robinson Crk to Robinson Creek Meadow Rd.
East on Robinson Creek Meadow Rd to Lewis River Rd.
Northeasterly on Lewis River Rd to Little Kalama River Rd.
Meandering northerly on the Little Kalama River Rd to Davis Peak Rd.
East on Davis Peak Rd to the powerline in the northeast quarter section of Township 06, Range 01E, Section 34.
North by northwest on the powerline to Little Kalama River Rd.
Meandering north on the Little Kalama River Rd to the crossing of the Little Kalama Riv in Township 06, Range 01E, Section 22.
Northwest on the Little Kalama Riv to Oxbow Rd.
West on Oxbow Rd to the school district boundary.
Counter-clockwise on the school district boundary to I – 5.
South by southeast on I – 5 to Lewis River Rd.
Northeast on Lewis River Rd to the point of the beginning.

Director District 5

Starting at the intersection the Lewis River Rd and the powerline in Township 05, Range 01E, Section 02.
North by northwest on the powerline to the Little Kalama River Rd.

Meandering north on the Little Kalama River Rd to the crossing of the Little Kalama Riv in Township 06, Range 01E, Section 22.

Northwest on the Little Kalama Riv to Oxbow Rd.

West on Oxbow Rd to the school district boundary.

Clockwise on the school district boundary to the county line in the northwest corner of Township 05, Range 01E, Section 12.

Southwest and northwest on the county line to the unnamed creek midway through Township 05, Range 01E, Section 10.

North on the unnamed creek to Lewis River Rd.

East on Lewis River Rd to the point of the beginning.

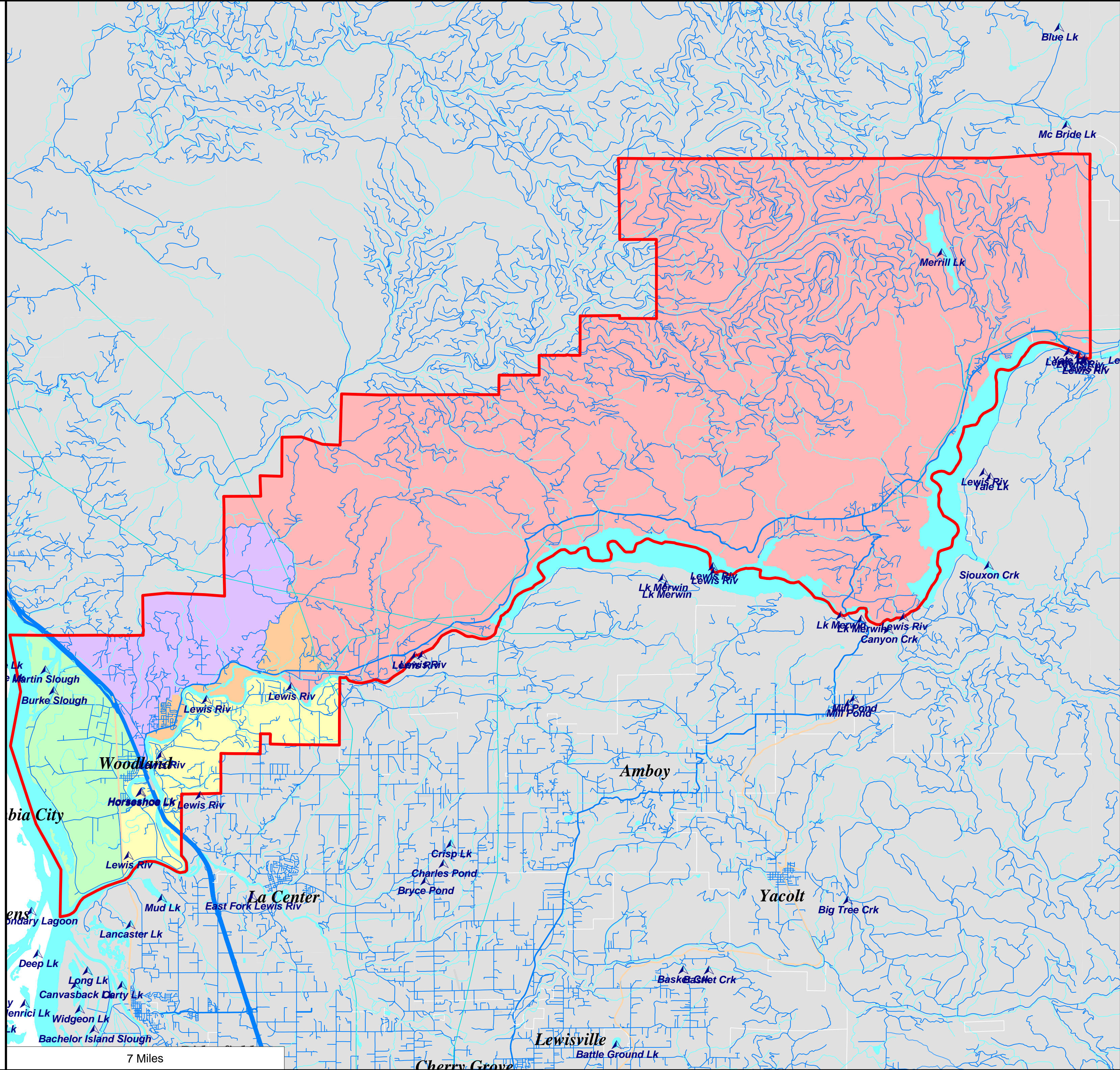
- 1st District
- 2nd District
- 3rd District
- 4th District
- 5th District

District Outline



Water Areas

▲ Name



Woodlan School District District Summary Report

Director District Number	Ideal Population	Total Population	Deviation from Ideal	% Deviation from Ideal	White Population	Hispanic Origin (of any race)	Non White & Mixed
1st	2,394	2,327	-67	-2.80	2,093	199	234
2nd	2,394	2,404	10	0.42	1,891	661	513
3rd	2,394	2,364	-30	-1.25	2,220	156	144
4th	2,394	2,469	75	3.13	2,235	173	234
5th	2,394	2,407	13	0.54	2,287	77	120
Totals.....		<u>11,971</u>	<u>1</u>		<u>10,726</u>	<u>1,266</u>	<u>1,245</u>

Woodlan School District

Summary of Population by Race and Hispanic Origin

District Number	Total Population	Total Population by Race							Two or More Races	Hispanic Origin (of any race)
		Single Race								
		Total	White	Black African American	American Indian and Alaska Native	Asian	Native Hawaiian and Other Pacific Islander	Other Race	Total	
1st	2,327	2,267	2,093	11	24	19	3	117	60	199
2nd	2,404	2,347	1,891	26	35	26	15	354	57	661
3rd	2,364	2,316	2,220	18	11	16	1	50	48	156
4th	2,469	2,412	2,235	23	22	45	6	81	57	173
5th	2,407	2,344	2,287	0	34	11	3	9	63	77
Totals.....	<u>11,971</u>	<u>11,686</u>	<u>10,726</u>	<u>78</u>	<u>126</u>	<u>117</u>	<u>28</u>	<u>611</u>	<u>285</u>	<u>1,266</u>

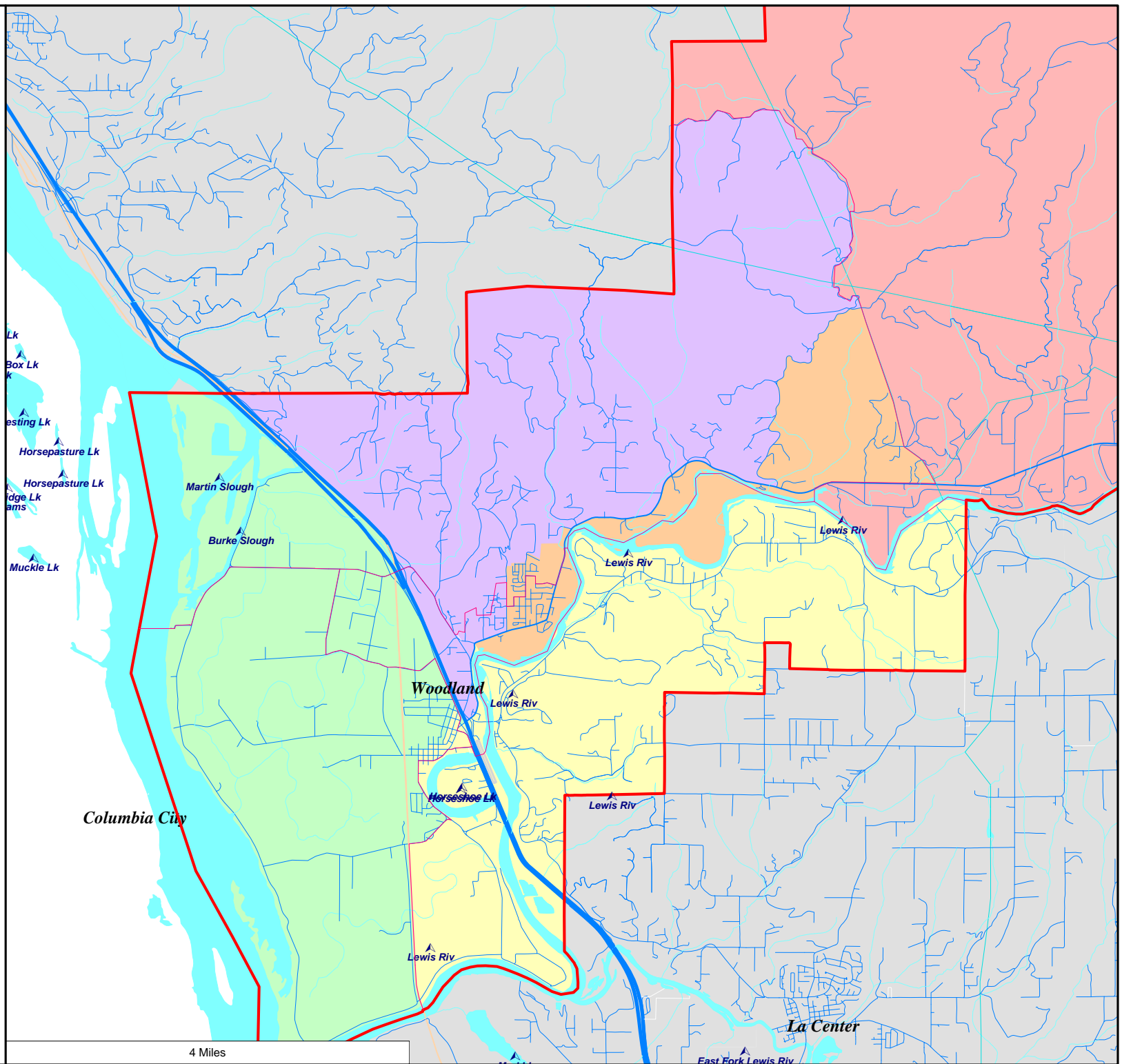
Woodlan School District -
Proposed Board Districts
as Approximated Using
Census 2010 Geography

- 1st District
- 2nd District
- 3rd District
- 4th District
- 5th District

District Outline

Water Areas

Name



Woodlan School District -
Proposed Board Districts
as Approximated Using
Census 2010 Geography

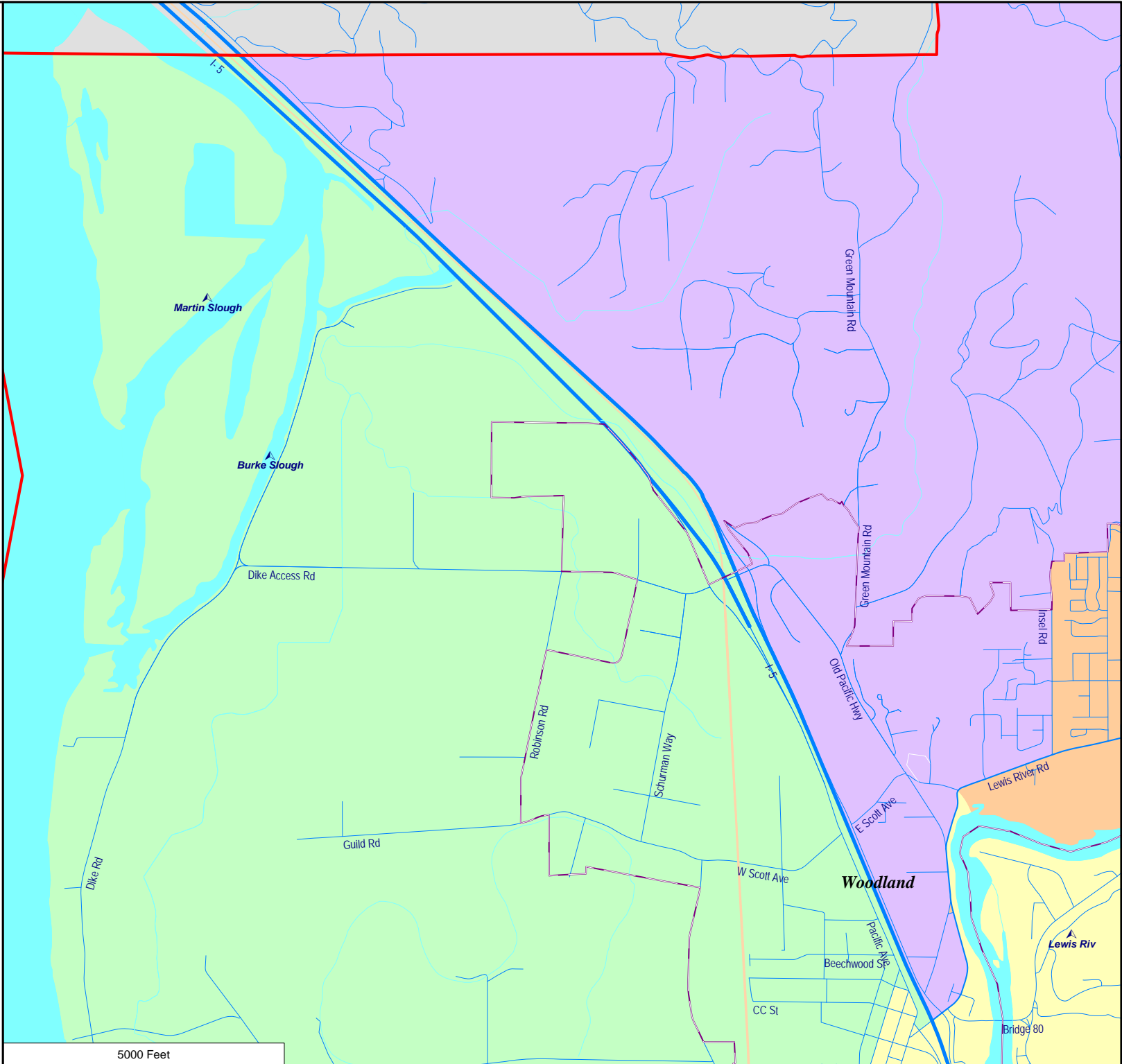
- 1st District
- 2nd District
- 3rd District
- 4th District

City Limits

District Outline

Water Areas

Name



Woodlan School District -
Proposed Board Districts
as Approximated Using
Census 2010 Geography

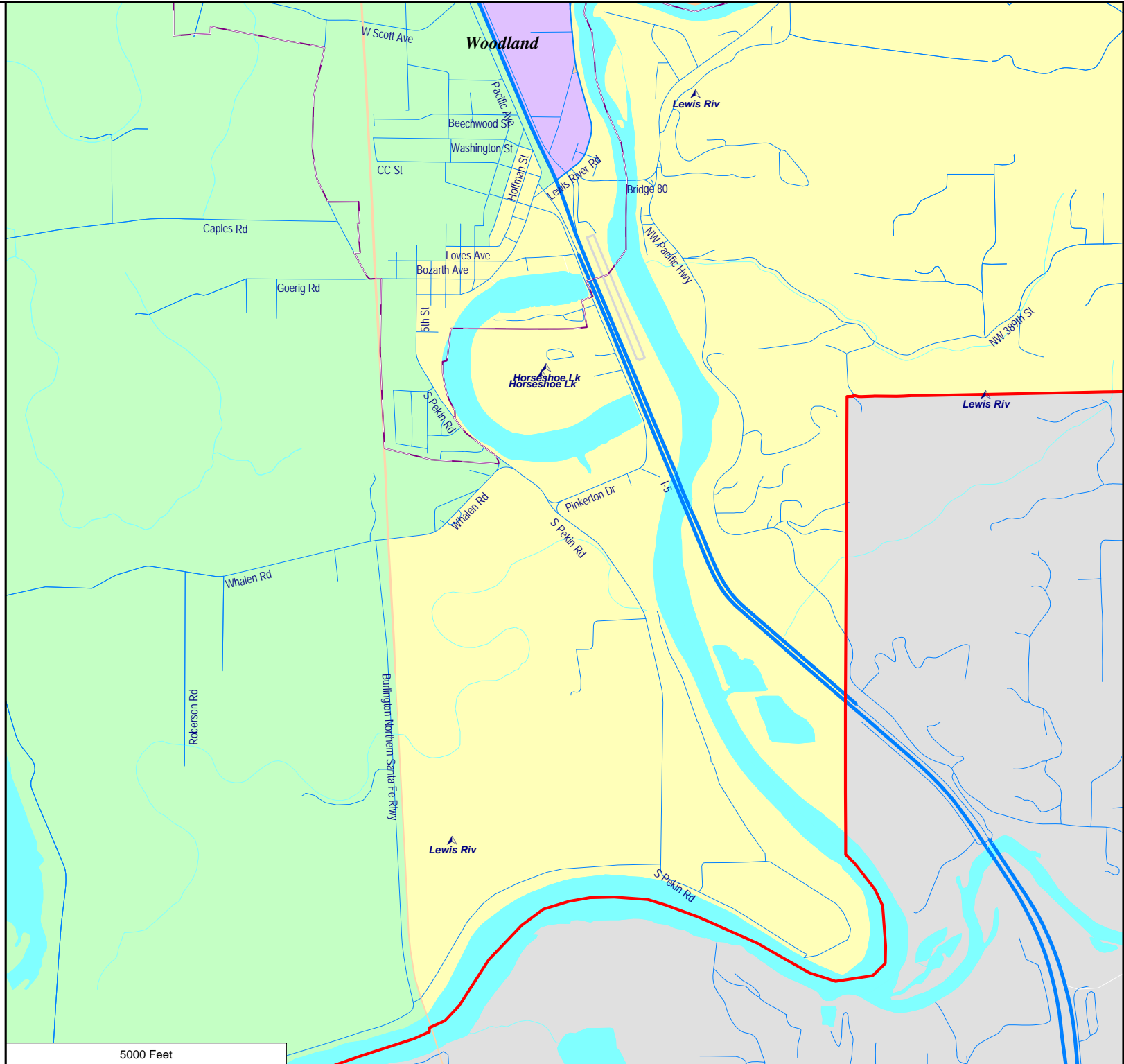
- 1st District
- 2nd District
- 3rd District
- 4th District

City Limits

District Outline

Water Areas

Name



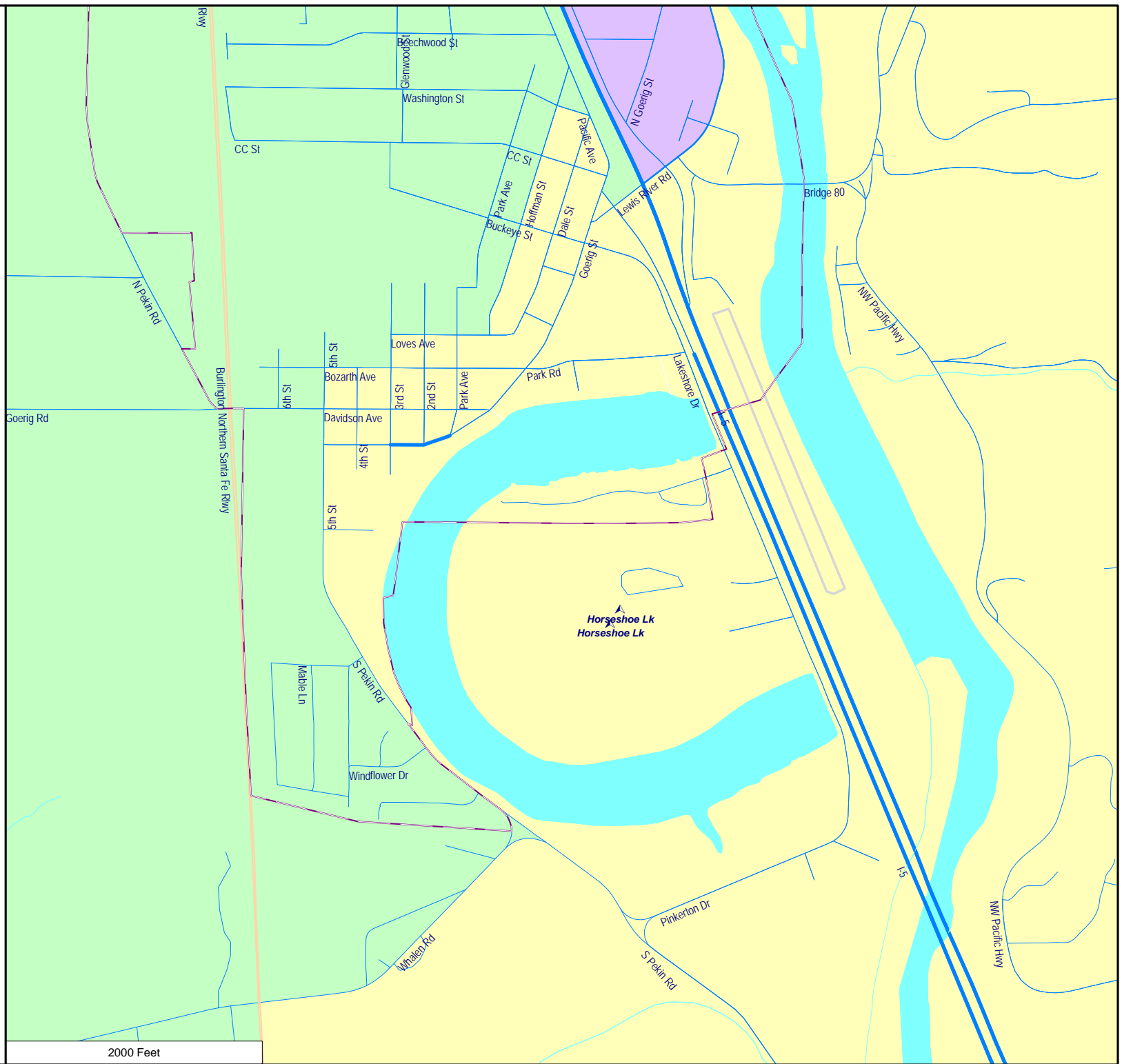
Woodlan School District -
Proposed Board Districts
as Approximated Using
Census 2010 Geography

- 1st District
- 2nd District
- 4th District

City Limits

District Outline

Water Areas Name



2000 Feet

Woodlan School District -
Proposed Board Districts
as Approximated Using
Census 2010 Geography

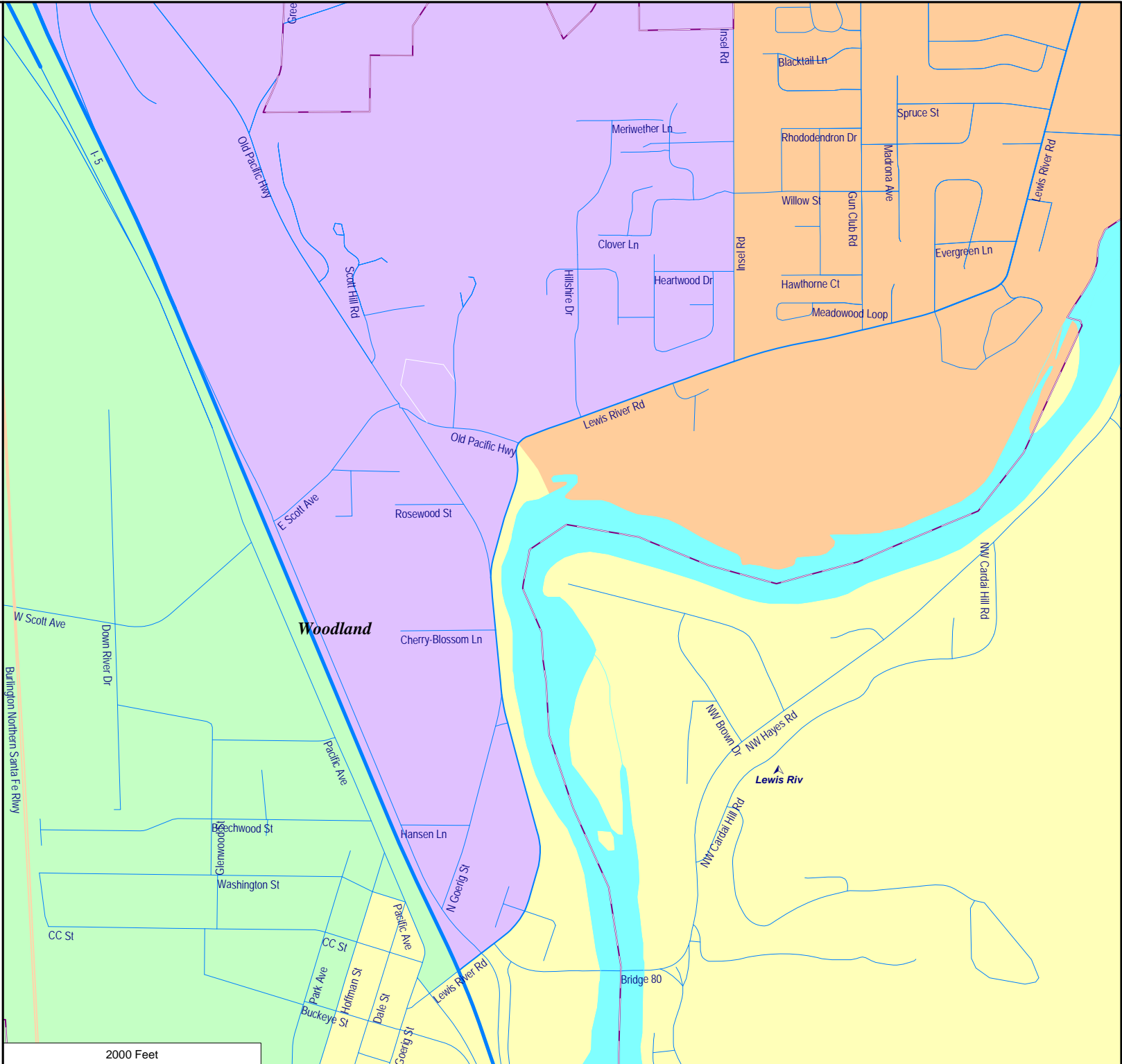
- 1st District
- 2nd District
- 3rd District
- 4th District

City Limits

District Outline

Water Areas

Name



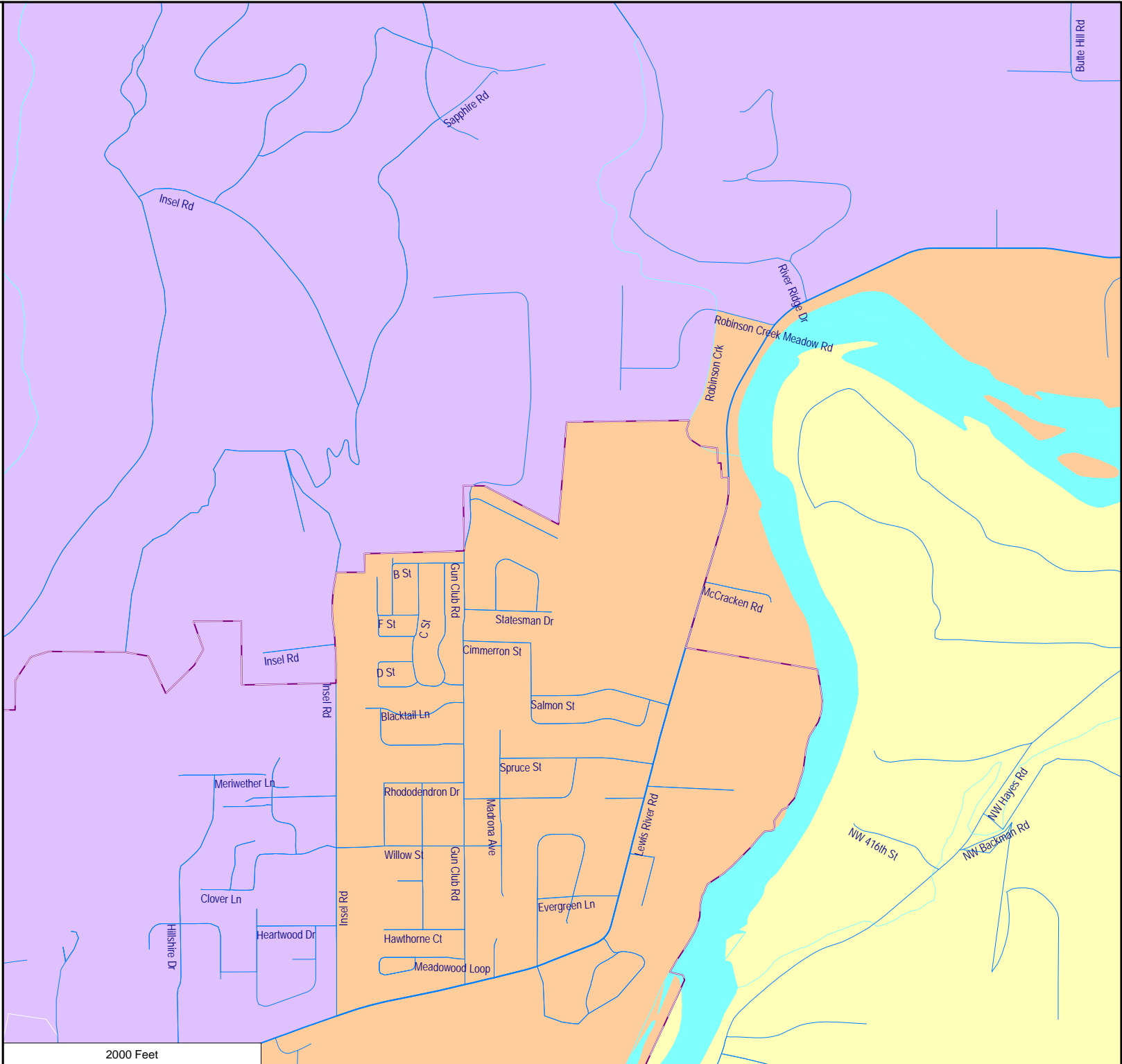
Woodlan School District -
Proposed Board Districts
as Approximated Using
Census 2010 Geography

- 1st District
- 2nd District
- 3rd District
- 4th District

City Limits

District Outline

Water Areas Name



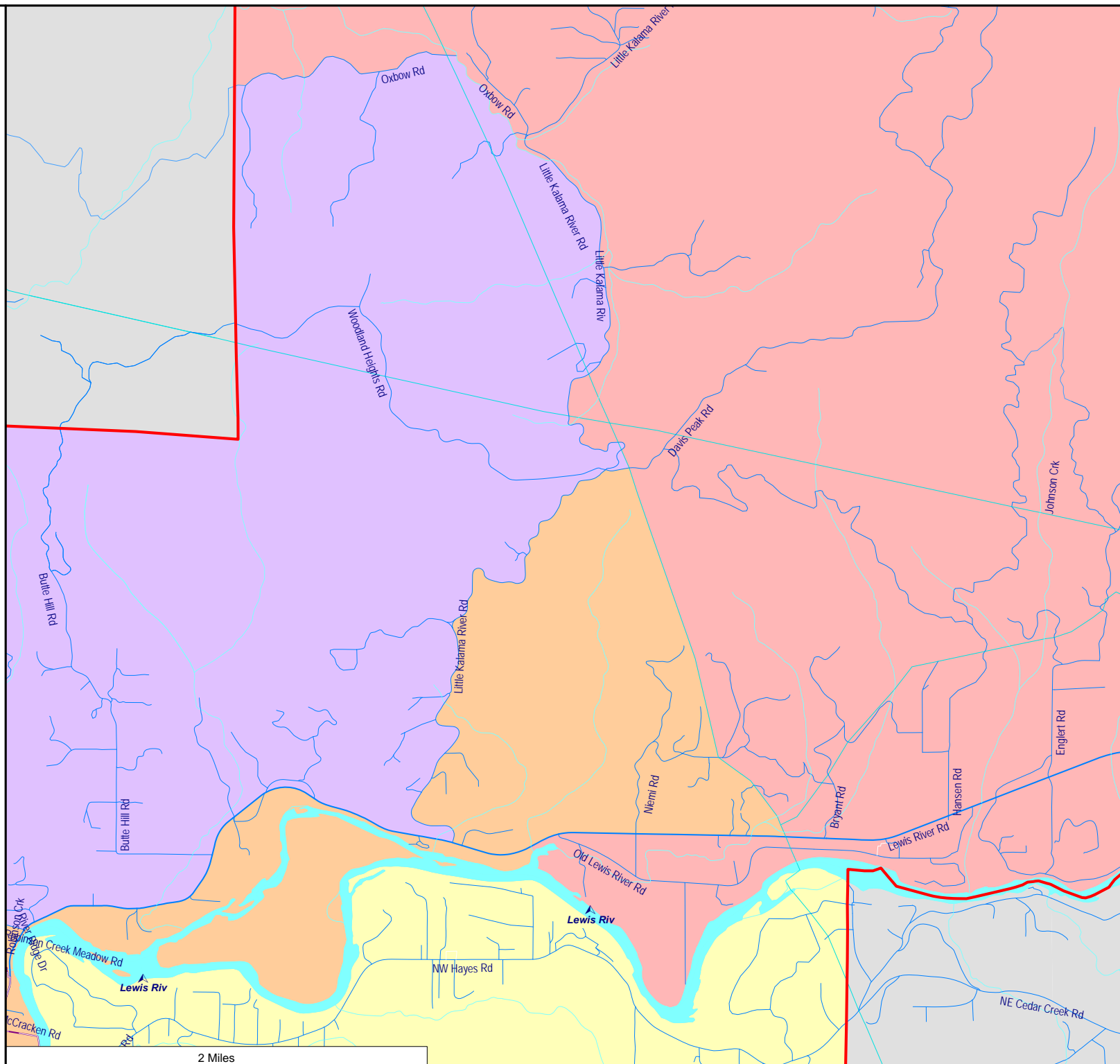
Woodlan School District -
Proposed Board Districts
as Approximated Using
Census 2010 Geography

- 1st District
- 3rd District
- 4th District
- 5th District

City Limits

District Outline

Water Areas
▲ Name



Woodlan School District -
Proposed Board Districts
as Approximated Using
Census 2010 Geography

- 1st District
- 3rd District
- 4th District
- 5th District

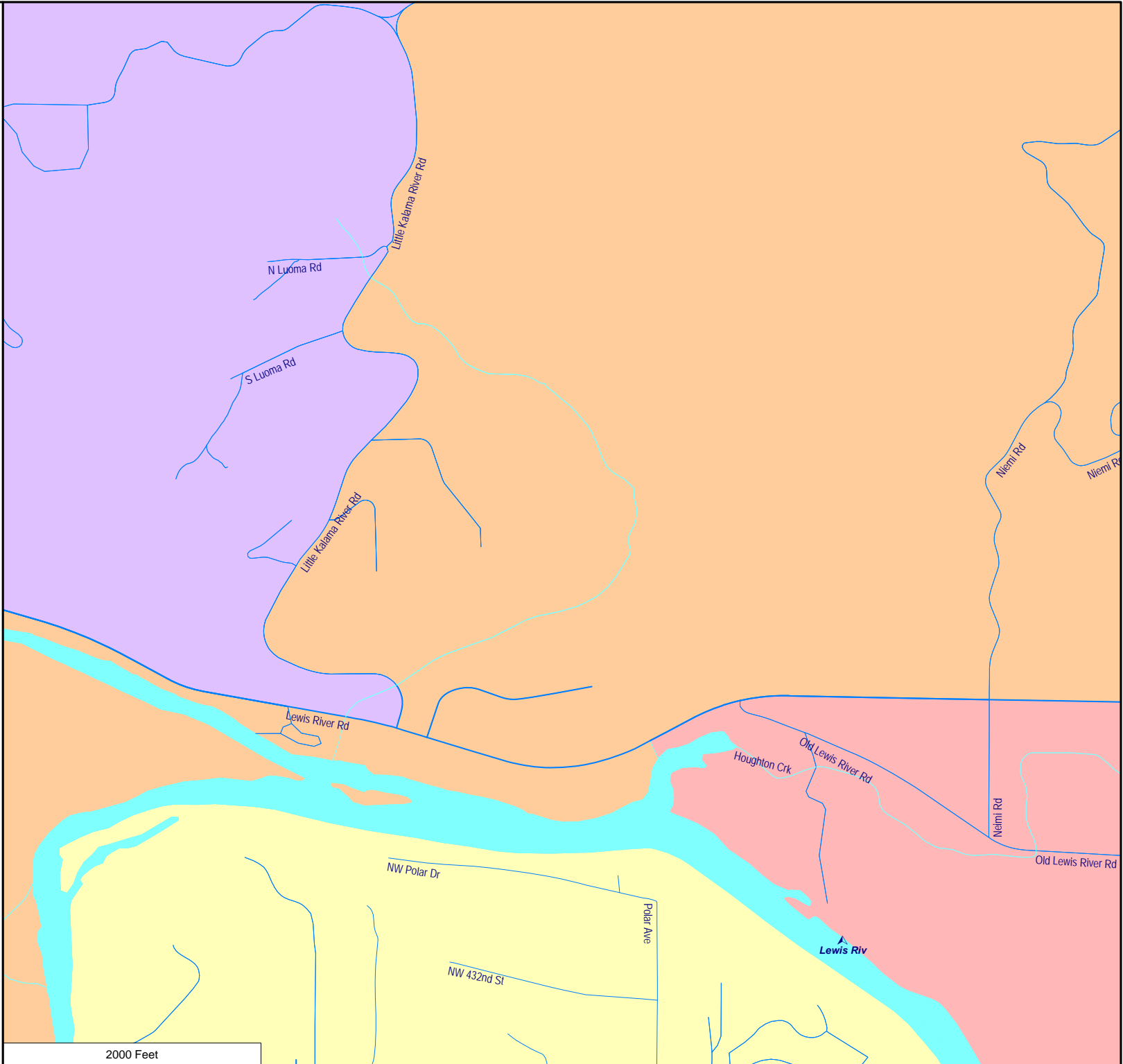
City Limits

District Outline

Water Areas



Name



Woodlan School District -
Proposed Board Districts
as Approximated Using
Census 2010 Geography

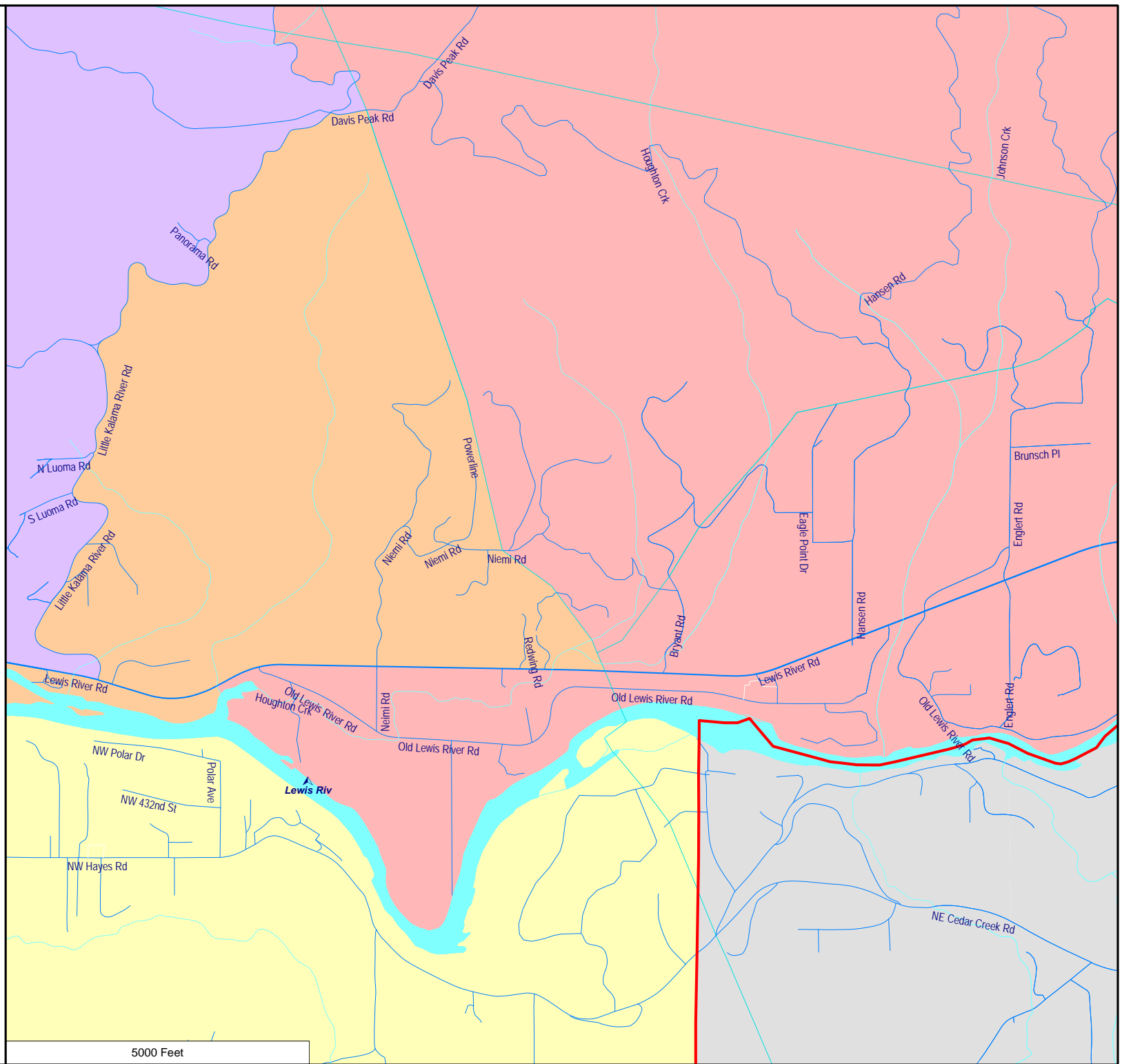
- 1st District
- 3rd District
- 4th District
- 5th District

City Limits




District Outline

Water Areas

Name



Woodlan School District -
Proposed Board Districts
as Approximated Using
Census 2010 Geography

-  3rd District
-  4th District
-  5th District

City Limits 

District Outline 

Water Areas

 Name

